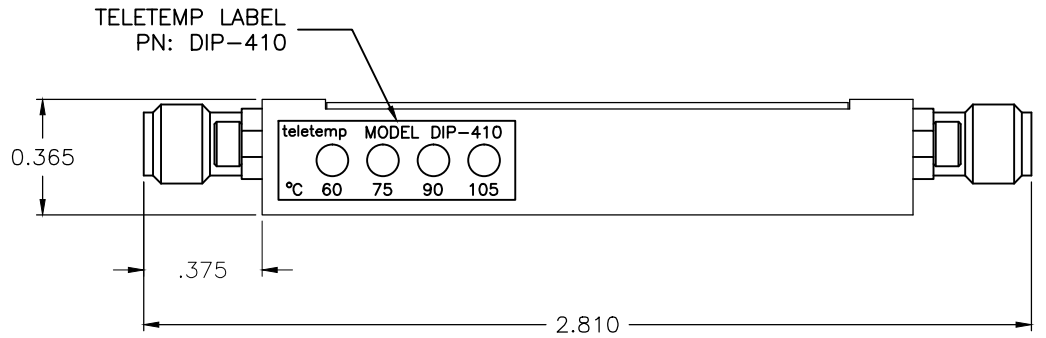
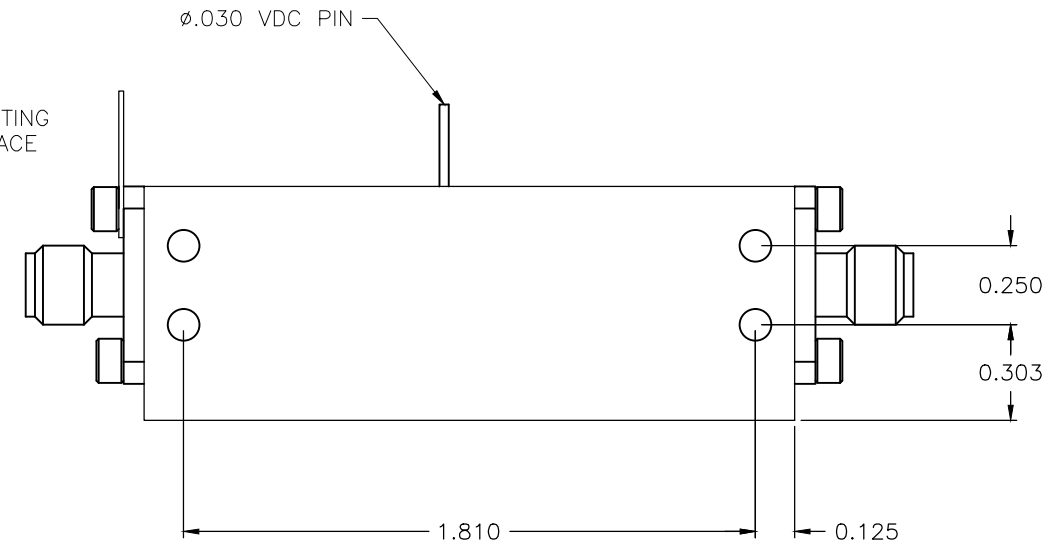
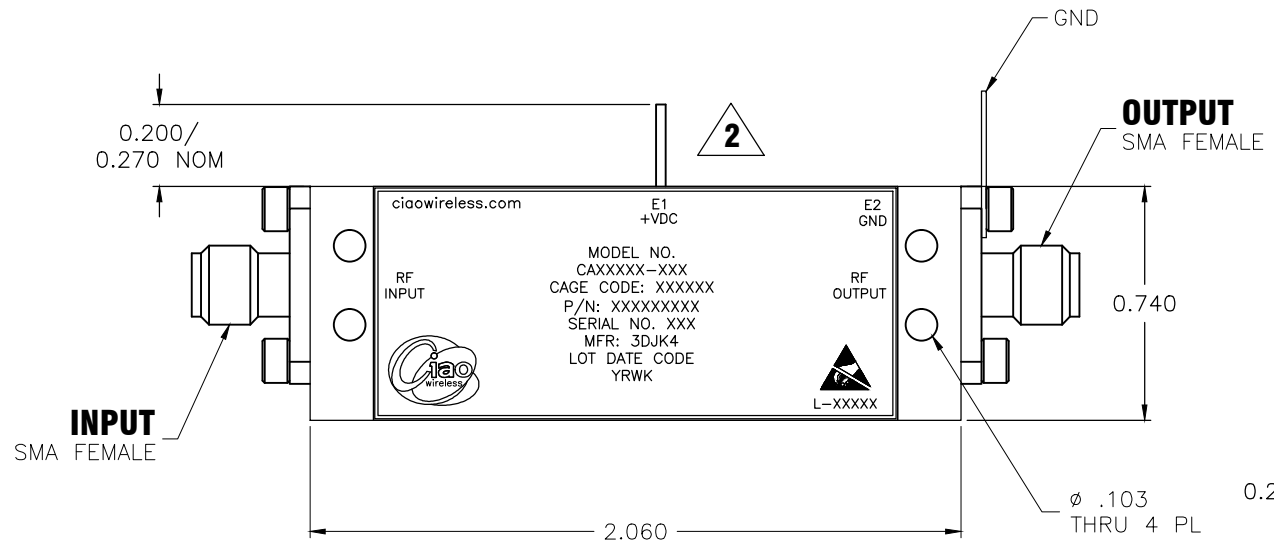
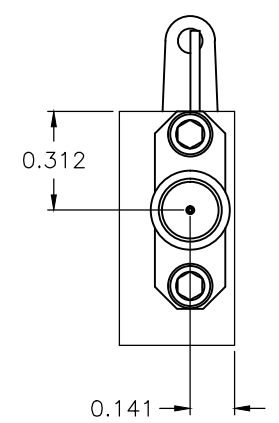
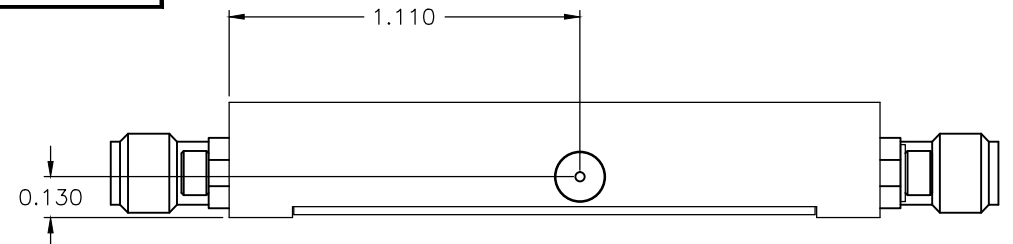



**\*\* PROPRIETARY DATA \*\***  
 THIS DOCUMENT CONTAINS DATA WHICH IS PROPRIETARY OR CONFIDENTIAL TO CIAO WIRELESS. THIS DOCUMENT AND THE DATA CONTAINED HEREIN SHALL NOT BE USED, DUPLICATED, OR ALTERED WITHOUT THE EXPRESSED WRITTEN CONSENT OF CIAO WIRELESS. ALL RIGHTS ARE RESERVED.

REVISIONS					
ZONE	REV	DESCRIPTION	ECO#	DATE	APPROVED
	A	RELEASED		10/18/14	JH
	B	REVISED NOTES & MODIFIED LOCATION OF +VDC PIN	4319		



- NOTES:**
1. OUTLINE IS AVAILABLE IN "STEP", "IGES", OR "DWG" FORMATS UPON REQUEST.
  2. GROUND AND VDC PINS ARE LOCATED APPROXIMATELY WHERE SHOWN AND ARE SUBJECT TO CHANGE WITHOUT NOTICE DUE TO PRODUCT ENHANCEMENT. WHEREVER POSSIBLE CIAO WILL PROVIDE NOTICE OF CHANGES TO CUSTOMER
  3. COMPLIANT TO AML K6 SIZE EXCEPT WITH CIAO WIRELESS STANDARD GROUND TAB SIZE AND +VDC PIN LOCATION FROM 1.031 TO 1.110

	CA618-371S
NEXT ASSY	USED ON
APPLICATION	DO NOT SCALE DRAWING

UNLESS OTHERWISE SPECIFIED: DIMENSIONS ARE IN INCHES. TOLERANCES ARE: FRACTIONS DECIMALS HOLES ANGLES $\pm 1/64$ .XX $\pm .03$ .XX $\pm .03$ $\pm 0^{\circ}30'$ .XXX $\pm .010$ .XXX $\pm .010$ MACHINED FINISH: 32 RMS REMOVE BURRS .005 MAX		CONTRACT NO.		 <b>CIAO WIRELESS</b> 4000 VIA PESCADOR CAMARILLO CA, 93012	
MATERIAL ALUMINUM 6061-T6		APPROVALS DATE			
FINISH ELECTROLESS NICKEL PER MIL-C-26074 CLASS 4 GRADE B .0005 $\pm$ .0001 MAX		DRAWN: A. ROQUE 10/08/14		AML K6 ICD ASSY SIZE CAGE CODE DWG. NO. REV. B 3DJK4 30683 B	
		ENGINEERING:			
		QUALITY ASSURANCE:		SCALE 1/1 SHEET 1 OF 1	
		MANUFACTURING:			

DWG NO. 30683

REV. A, 1/07